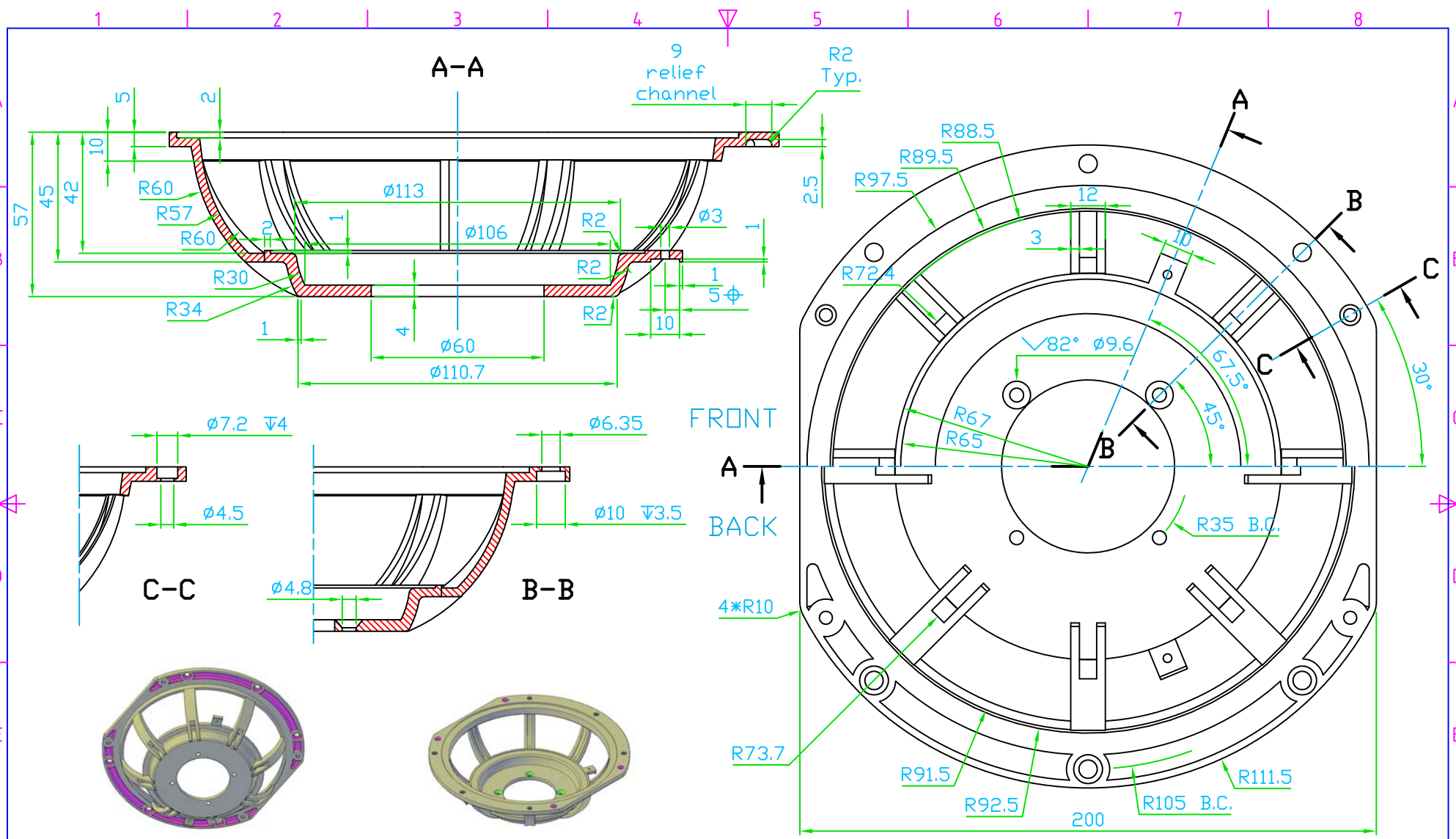


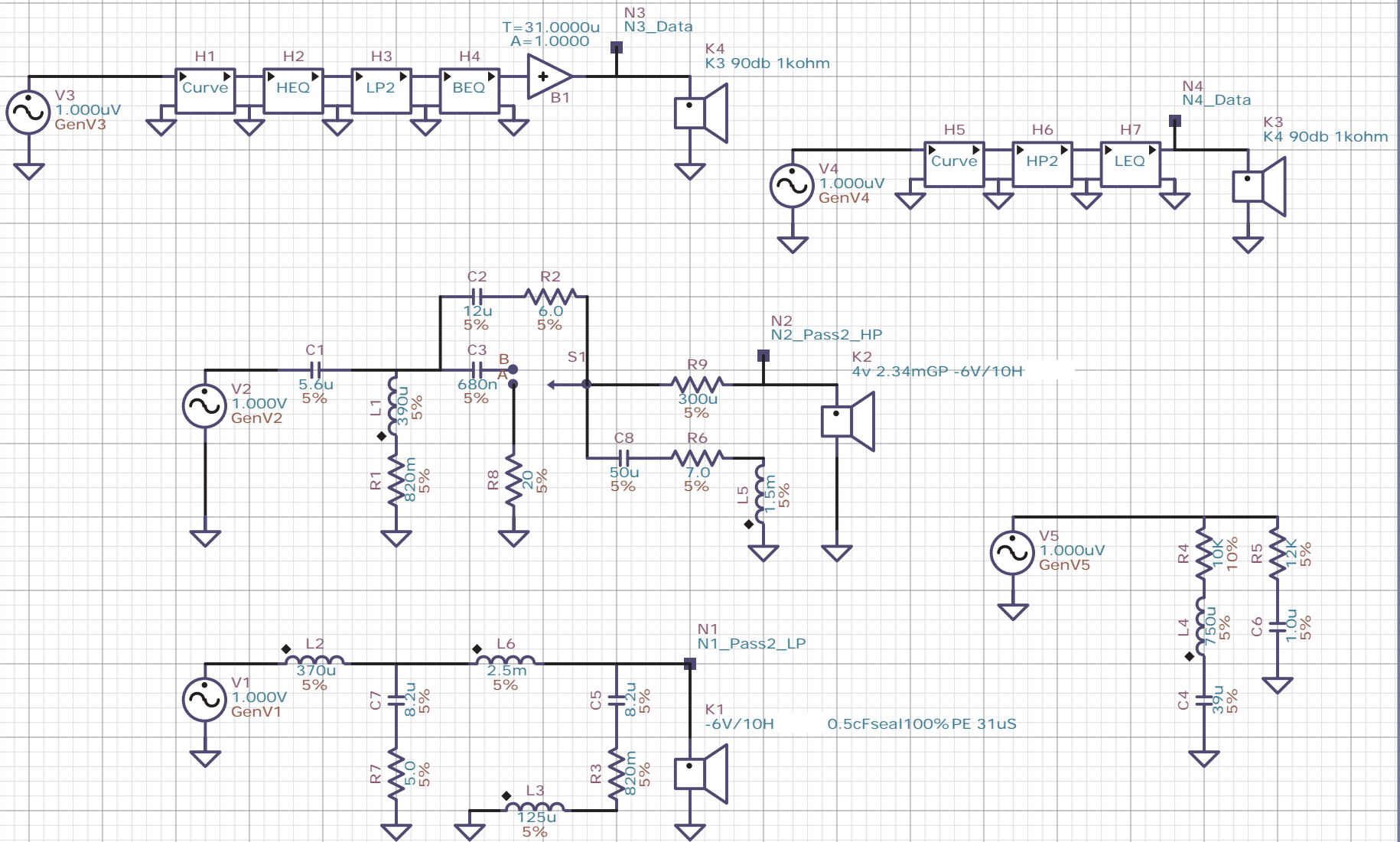
△	-	-	-	-	-	-	Itemref	Qty: 1	DO NOT SCALE DIGITAL.	Part Nr: 123456	Units: Millimeter			
△	-	-	-	-	-	-	Designed by	PHILIP_BAMBERG	SUPPLIER:	VENDOR_NAME	MATERIAL:	CAST_ALUMINUM	Tolerance:	X+-1;X.X+-0.1;X.XX+-0.05
△	-	-	-	-	-	-	0	Initial Release.	PEB	PEB	2012.05.25	mm.dd	Y	
Rev	Description of Revision or Note						Design	Drawn	Date	Approve	Submit?			
• May 2012 Customer_name This drawing contains intellectual information that is proprietary and confidential to Customer_name. Do not reproduce.														

EXAMPLE		FINISH:	SEE_SEPARATE_DOC	Scale	Sheet
		File name	8-SPOKE-BASKET		
				COVER	



△	-	-	-	-	-	-	-	-	-	-	-	-	-	-	-	-	-	-	-	-
△	-	-	-	-	-	-	-	-	-	-	-	-	-	-	-	-	-	-	-	-
△	-	-	-	-	-	-	-	-	-	-	-	-	-	-	-	-	-	-	-	-
0	Initial Release.	PEB	PEB	2012.05.25	mm.dd	Y														
Rev	Description of Revision or Note	Design	Drawn	Date	Approve	Submit?														
© May 2012 Customer_name This drawing contains intellectual information that is proprietary and confidential to Customer_name. Do not reproduce.																				

Itemref	Qty: 1	DO NOT SCALE DIGITAL.	Part Nr: 123456	Units: Millimeter
Designed by	PHILIP_BAMBERG	SUPPLIER:	MATERIAL:	Tolerance:
	VENDOR_NAME		CAST_ALUMINUM	X+-1;X.X+-0.1;X.XX+-0.05
EXAMPLE			FINISH:	Scale
			SEE_SEPARATE_DOC	0.8
			File name	Sheet
			8-SPOKE-BASKET	2/2
			COVER	



PE 0.5cF MT cabinet, fully stuffed 5-6oz.

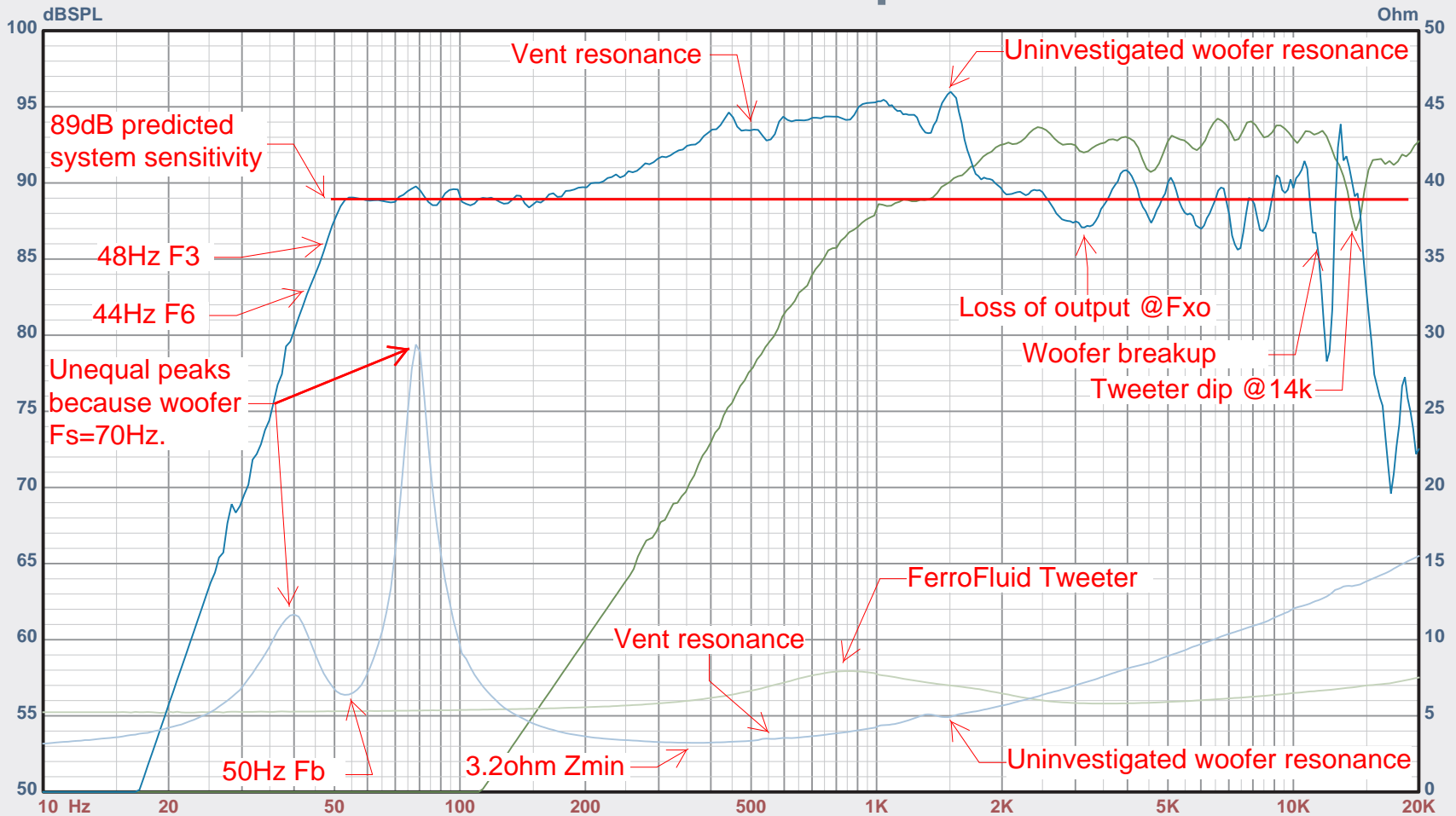
L2, L3, L6 =PL18g. L5 =PL20g

L1 =20g w/0.82ohm

R2=Mills

Notes

SPL vs Freq



Map

75: *00hv8FTgp1.75vTestMuleTweeterCOMP2
 76: *00hv8FTgp1.75vTestMuleWoofer75%Vent COMP2

Example: Analysis of customer submitted prototype sample speaker

Notes

Higher Data = 00hv8FTgp1.75vTestMuleTweeter COMP1

Higher Data = 00hv8FTgp1.75vTestMuleWoofer75%Vent COMP1 Splice@150.

Lower Data = 00hv1Mgp1.75vTestMuleTweeter

Lower Data = *90h1MgpTestMuleWoofer75%VentOpenedF-glass

COMP1=30-degAVGabove1k & 1Mgp below1k

0 DELAY

0 DELAY

LMS

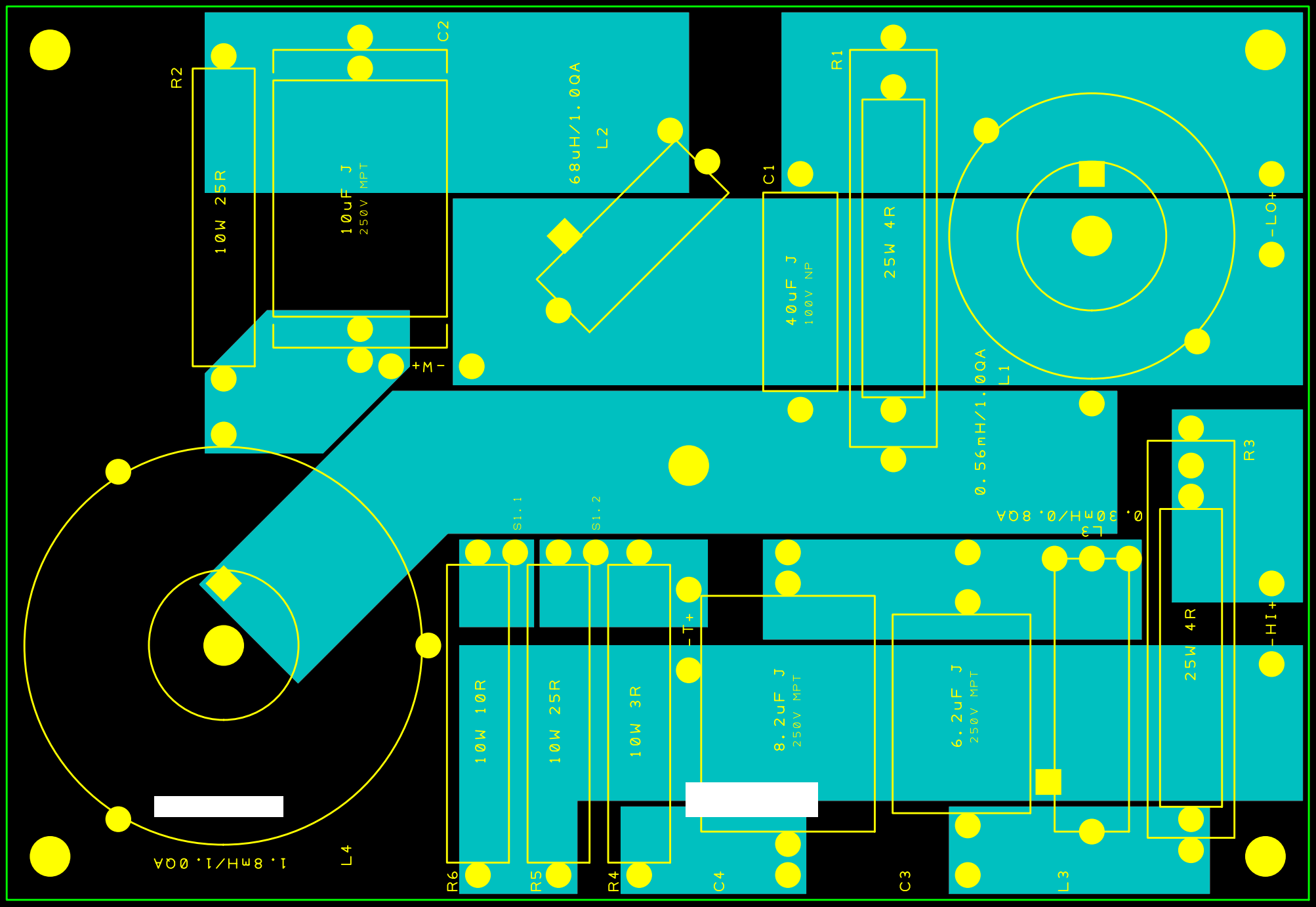
4.6.0.371
 May/29/2007

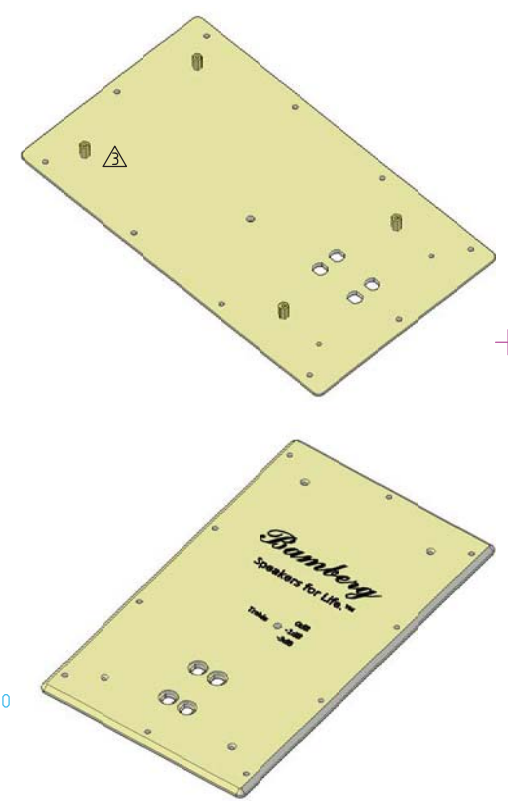
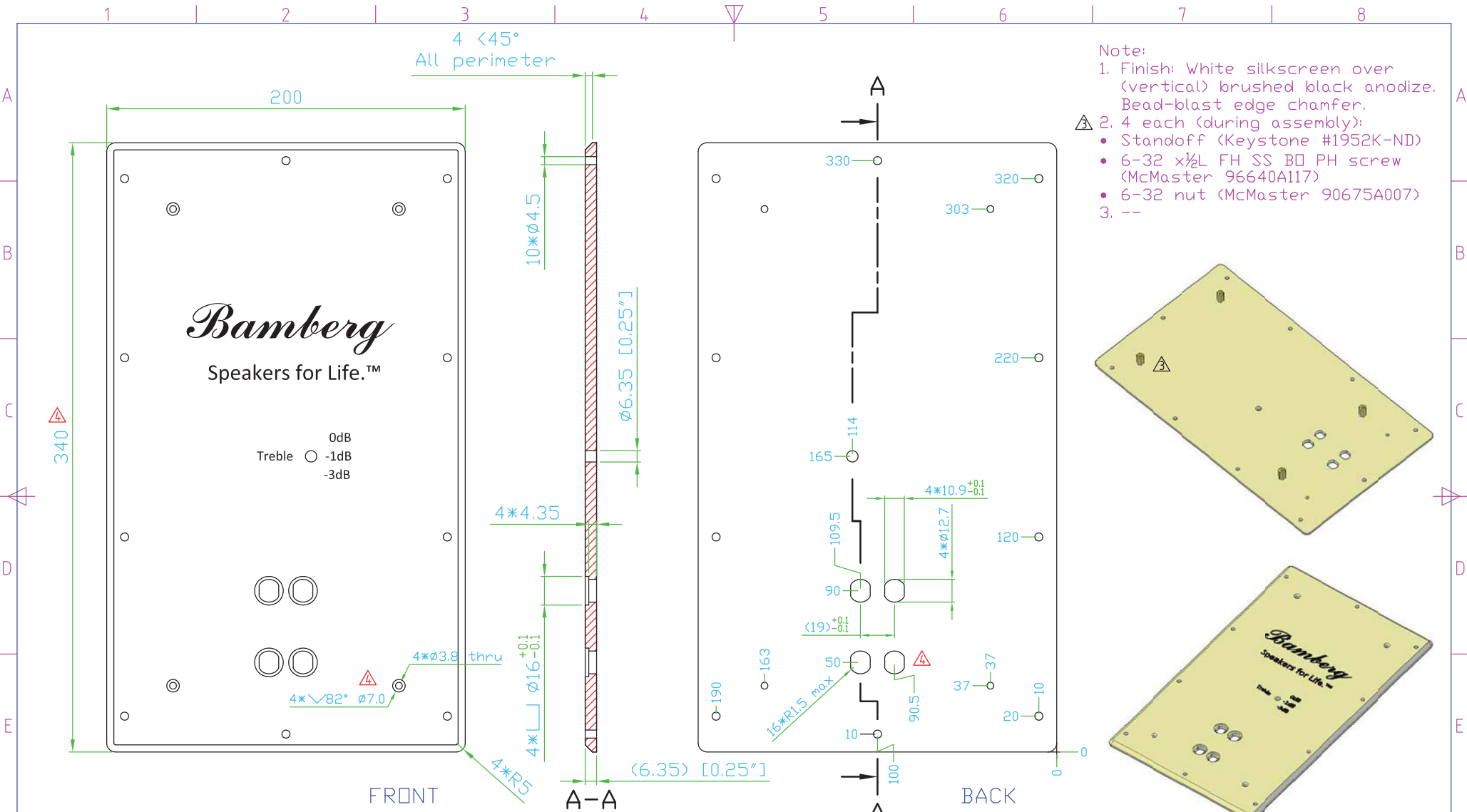
Person: Philip E Bamberg
 Company: Example

Project: Example
 File: RAW_SPLZT.lib

Feb 12, 2013
 Tue 8:35 am

LINEAR X
 S Y S T E M S





4	⚠	Stretch height 40mm. Update C-sink to ø7.0. Add bi-wire C-bores. Relocate perimeter holes.	-	PEB	-	-	2011.10.19
3	⚠	Update standoff/nut specs. Add frontside ISO view [D7].	-	PEB	-	-	2009.11.25
2	⚠	Change switch and B-post locations. Simplify silkscreen. C3 is full bypass cap.	-	PEB	-	-	2009.11.12
1	⚠	Improve PCB and Bezel layout for larger capacitors.	-	PEB	-	-	2009.10.28
0	-	Initial Release.	PEB	PEB	PEB	-	2009.10.18
Rev	[Loc]	Description of Revision or Note	Design	Drawn	Ccheck'd	Aprov'd	Date

Itemref	Qty: 1	DO NOT SCALE DIGITAL.	Part Nr:	Units: Millimeter [Inch]
Designed by PHILIP_BAMBERG	Checked by PEB		MATERIAL: 6061-T6_ALUM	Tolerance: X+-1;X,X+-0.1;X,XX+-0.05
BEZEL_20X30_BI-WIRE			FINISH: (NOTE_1)	Scale 1:2
Bamberg Engineering Sound Lab			File name XO_&_BEZEL_20X34_BI-WIRE	Sheet 3/3

© Jan 2008 Bamberg Engineering. This drawing contains intellectual information that is proprietary and confidential to BESL. Do not reproduce.

Bamberg

Speakers for Life.™

Treble  0dB
-1dB
-3dB

